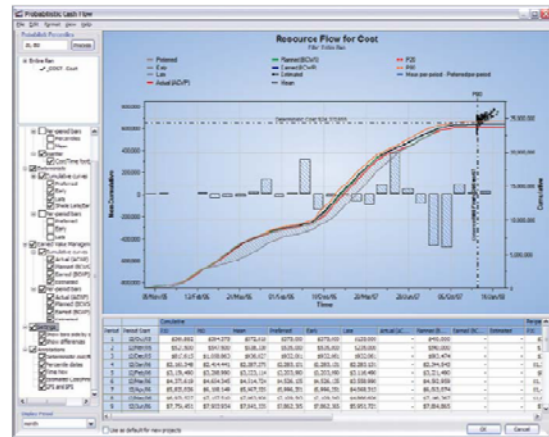


Analysis of project risks with Primavera Risk Analysis (Pertmaster)

Course Objectives:

Primavera Risk Analysis (Pertmaster) is a comprehensive instrument for project risk management. The tool is used to identify risks, estimate their impact on the project's schedule and costs and respectively, take the necessary preventive and corrective measures. Thus the Project Manager can develop a realistic project plan that could be executed with a great degree of certainty. Primavera Risk Analysis is integrated with Primavera P6 and Microsoft Project.



The training provides the participants with knowledge and skills for identifying and analyzing the risks and the degree of uncertainty in the project with regard to activities, schedule, resources and costs.

Course Agenda:

- Introduction to project risk management;
- Introduction to Primavera Risk Analysis, navigation in the interface;
- Reviewing the project schedule;
- Using Quick Risk, initiating risk analysis;
- Defining probabilities for existence of activities;
- Probabilistic branching;
- Risk Register - identifying risks, estimating their impact, generating pre-mitigation and post-mitigation plans;
- Correlations;
- Modeling the uncertainties in costs – fixed costs, changes in the prices and the availability of resources.

Course Duration: 2 days, 6 academic hours each.

The training is delivered in Bulgarian language. Each participant is provided with a full set of training materials and a certificate of attendance.

Training Facility:

The training is delivered at the TechnoLogica Education Center in Sofia. The Education Center of TechnoLogica is equipped with modern computers and presentation equipment. Each participant is provided with an individual working place, computer and access to all necessary information and communication resources. The participants enjoy lunch and coffee breaks at comfortable environment.

Contacts:

Nadezhda Peneva
Training Centre Manager
TechnoLogica Ltd.
46 Chervena Stena Str.
1421 Sofia, Bulgaria
tel./fax: (+359 2) 91 91 2/160
e-mail: NPeneva@technologica.com